

### Ingredients

ENRICHED FLOUR (WHEAT FLOUR, NIACIN, IRON, THIAMINE MONONITRATE, RIBOFLAVIN, FOLIC ACID), SUGAR, PARTIALLY HYDROGENATED VEGETABLE SHORTENING (SOYBEAN AND/OR COTTENSEED), NONFAT MILK, EGG YOLK, MONO AND DYGLYCERIDES, SOYBEEN OIL, SALT, LEAVENING (SODIUM ACID PRYOPHOSPHATE, BAKING SODA, MONOCALCIUM PHOSPHATE), CELLULOSE GUM, ARTIFICIAL FLAVOR, SOY FLOUR.

### Allergy Info

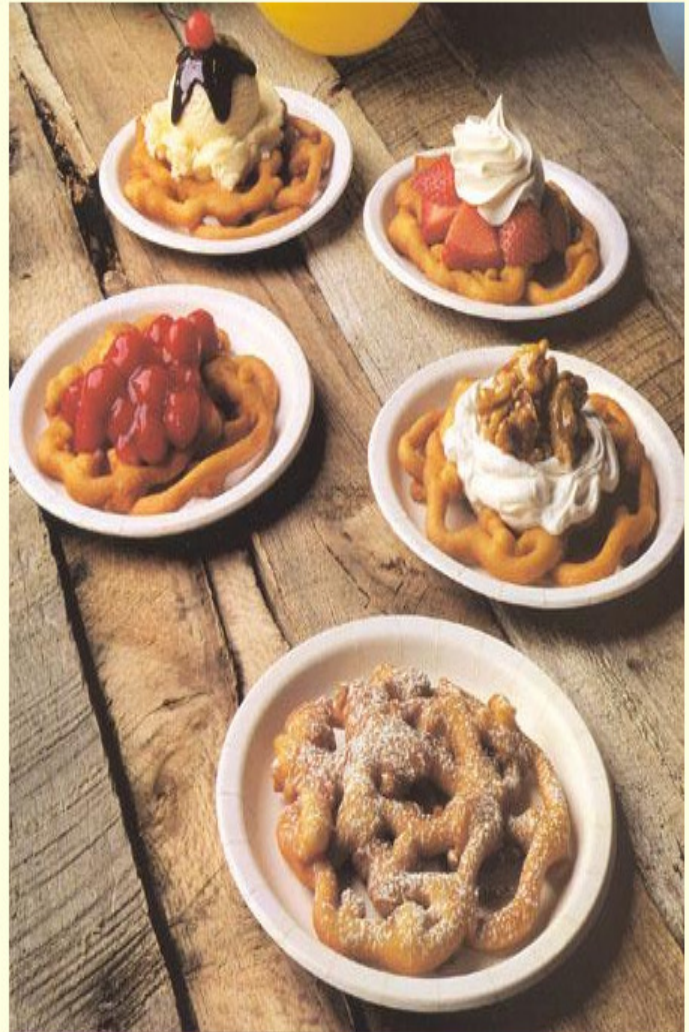
(Manufacturers are asked to review for the following allergens: milk, egg, peanut, wheat, soy, tree-nut, and shellfish. If applicable, they will appear below.)

WHEAT, MILK, EGG AND SOYBEAN

### Nutrition Facts

Serving Size	2.5 oz
Servings Per Case	48.00
<b>Amount Per Serving</b>	
<b>Calories</b> 320.0	<b>% DV*</b> 0%
Fat Calories 144.0	
<b>Total Fat</b> 16.0g	0%
Saturated Fat 4.0g	0%
<b>Cholesterol</b> 40.0mg	0%
<b>Sodium</b> 300.0mg	0%
<b>Total Carbohydrates</b> 40.0g	0%
Dietary Fiber 1.0g	0%
Sugars 16.0g	0%
<b>Protein</b> 5.0g	0%
<b>Vitamin A</b> 100.0 IU	0%
<b>Calcium</b> 80.0mg	0%
<b>Iron</b> 1.8mg	0%
<b>Thiamin</b> 0.2mg	0%
<b>Riboflavin</b> 0.2mg	0%
<b>Niacin</b> 2.0mg	0%

\* Percent Daily Values are based on a 2,000 calorie diet. Your daily values may be higher or lower depending on your calorie needs.



### School Equivalents

Serving Size	2.5 oz
Meat/Meat Alternatives	
Fruit/Vegetables	
Grain/Bread	2
Milk	
Child Nutrition	NO